

FALLING  
WALLS  
LAB

# BREAKING THE WALL OF UNDERWATER VISIBILITY

MOHCINE BOUDHANE

MOROCCO

VIDZEMES UNIVERSITY OF APPLIED SCIENCES, LATVIA

FALLING WALLS LAB RIGA 2019



DAAD

Deutscher Akademischer Austauschdienst  
German Academic Exchange Service

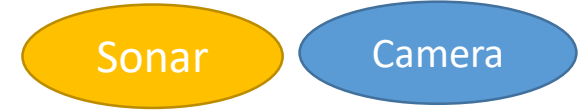


Midway : Les conséquences de notre inconscience



- **Pollution (Microplastics)**
- **Overfishing & Destructive Fishing**
- **Physical properties of water**

## Sensors



- Long range
- Automatic operational treatments
- high resolution
- Facilitates interpretation
- Low cost

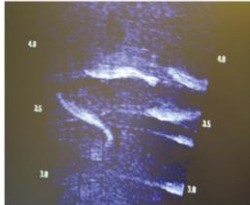


- Low resolution
- Difficult object identification
- Very short range
- Complexity of automatic exploitation
- Large data and variable qualities

# MOHCINE BOUDHANE

# BREAKING THE WALL OF UNDERWATER VISIBILITY

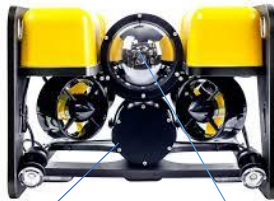
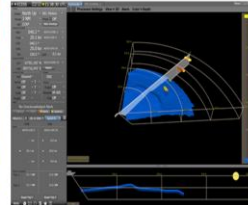
**SONAR**  
Acoustical device based on sounds to detect object underwater



**CAMERA**  
Optical device based on light (ordinary images)

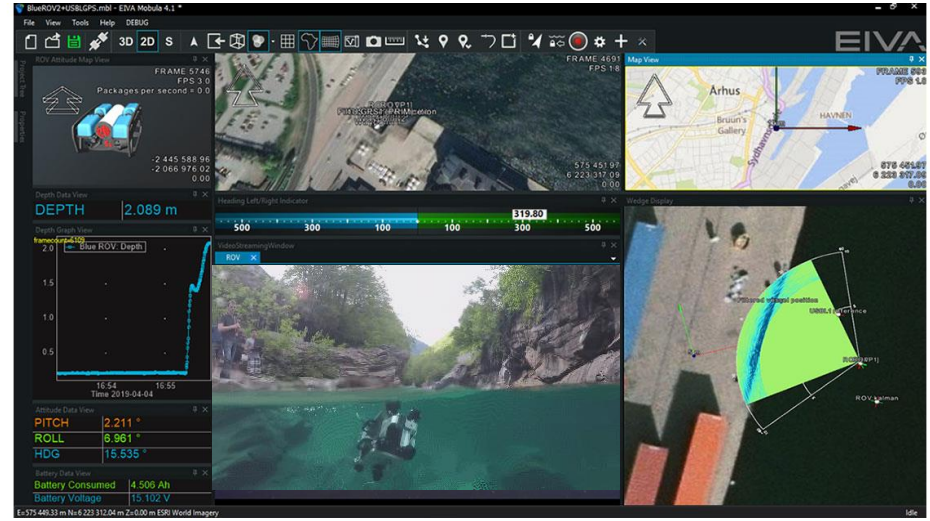


**LASER**  
Measure the distance between object and the sensor.



Sonar

Camera + laser



**QUESTIONS?**